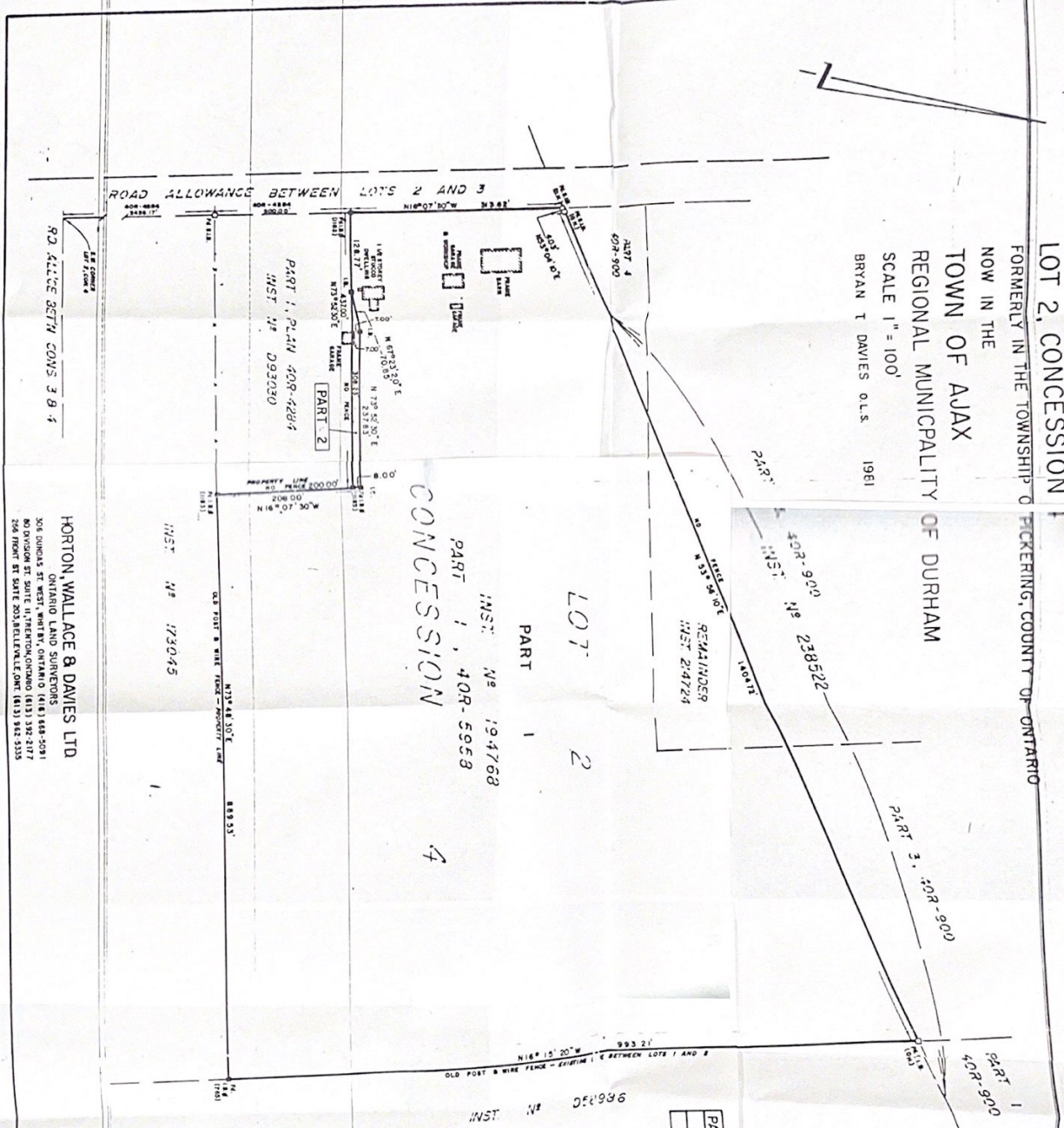


PLAN MATERIAL
 PLAT: METER - CIRCULAR
 BLUE - PROGRAM
 PROCESS - SPECIAL Y

PLAN AND FIELD NOTES OF SURVEY
 OF PART OF
LOT 2, CONCESSION
 FORMERLY IN THE TOWNSHIP OF PECKERING, COUNTY OF ONTARIO
 NOW IN THE
TOWN OF AJAX
 REGIONAL MUNICIPALITY OF DURHAM
 SCALE 1" = 100'
 BRYAN T DAVIES O.L.S. 1981



CAUTION: THIS PLAN IS NOT A
 PLAN OF SUBDIVISION WITHIN THE
 MEANING OF THE PLANNING ACT

SCHEDULE

PART	DESCRIPTION	INST. NO.	AREA
1	PART OF LOT 2, CONCESSION 4	194768	20.882
2		21841	

NOTES AND LEGEND
 Bearings are astronomic and are referred to the southerly
 limits of Parts 1, 3 and 5, Plan 40R-900, shown thereon
 as N 53° 56' 10" E.
 - - - denotes steepled iron bar, 1" x 1/4" x 48"
 - - - round iron bar 1/4" x 1/4" x 24"
 - - - round Ontario Hydro
 - - -

SURVEYOR'S CERTIFICATE

I CERTIFY THAT
 1. This survey and plan are correct and in
 accordance with The Survey Act and
 The Registry Act and the regulations made
 thereunder;
 2. The survey was completed on the 6th
 day of May, 1981.

Bryan T. Davies
 Bryan T. Davies
 Ontario Land Surveyor
 12 MAY, 1981.

HORTON, WALLACE & DAVIES LTD.
 ONTARIO LAND SURVEYORS
 505 DUNDAS ST. WEST, WENTZ, ONTARIO (416) 548-5091
 80 DIVISION ST. SUITE 11, WENTZ, ONTARIO (416) 592-2177
 206 FRONT ST. SUITE 203, BELLEVILLE, ONT. (813) 942-5333

RECEIVED AND DEPOSITED
 May 1981
 Registrar
 Registrar for the
 Ontario Land Surveyor
 Division of
 Dundas, Ont. 901

PLAN 40R-6382